

TEX20 series

Diagnostic Ultrasound System

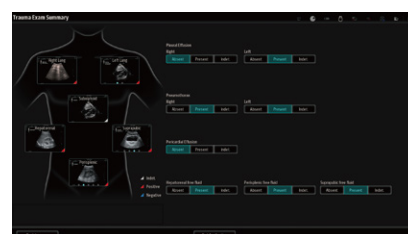
Emergency

Fast in every aspect, such as quick boot-up, simple operation, clear image...

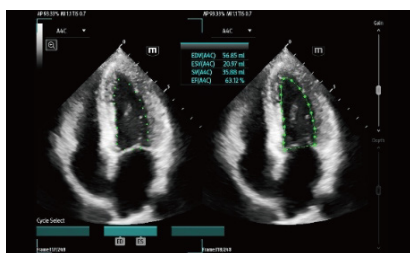
On the basis of those dedicated designed features, the brand-new ultrasound system **TEX20** series brings an unprecedented clinical-oriented solution to emergency medicine, aiming to make ultrasound a more intelligent and dedicated assistant for clinicians.

Clinical-oriented workflow and intelligent tools to facilitate operation and assist in fast diagnosis

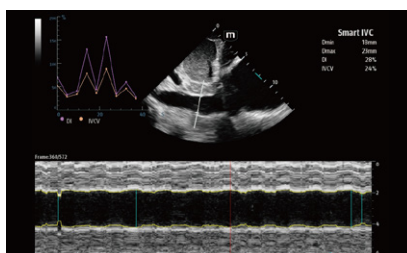
- X-Pilot: Clinical application-oriented workflow for emergency ultrasound, includes Trauma, Respiration and Shock application protocols which are based on the professional society guidelines, offering real-time workflow guidance and intuitive summary for quick decision-making.
- AutoEF Plus: Realtime automatic cardiac systolic function evaluation.
- Auto DFR: Automatic cardiac diastolic function evaluation.
- Smart Fluid Management: Includes Smart IVC, Smart VTI and Smart B-Line, automatically calculates relative indices to guide fluid therapy.
- Smart FHR OB1: Automatic fetal heart rate measurement and real-time monitoring for first trimester (10-14 weeks).



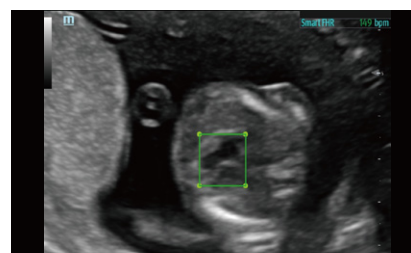
Trauma Summary



AutoEF Plus



Smart IVC



Smart FHR OB1

mindray

TEX20 series

Diagnostic Ultrasound System

Emergency

Wireless design to better fit emergent environment and enhance efficiency



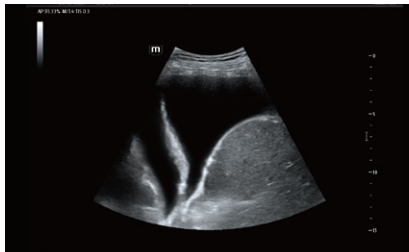
Wireless transducer i3P:
Single crystal phased array with small footprint, light weight, quick charging and IP68 waterproof rating, dealing with complex clinical scenarios in and out of hospital.



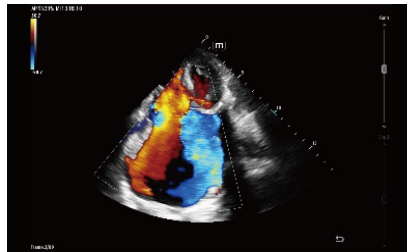
Wireless charging:
Wall-mounted or ground-based charging stations, immediate moving without unplugging power cable when emergent use.

Dedicated transducer portfolio to cover high level emergency ultrasound application

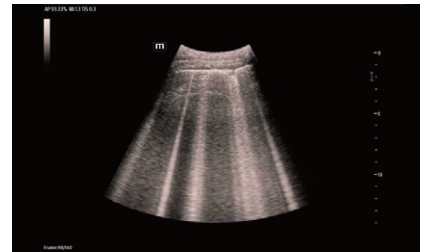
- Dual single crystal transducer configuration: phased array SP5-1s and convex SC6-1s, higher resolution and penetration with more detail information.
- Linear transducer L12-3RCs and L12-3VNs with user-defined buttons: 3 user-defined buttons support remote control of frequently used functions, especially suitable for sterile or confined environment.
- Transvaginal transducer V11-3Hs: clear image with wide field of view for gynecologic acute abdomen.
- 4 active transducer connectors support quick switching, avoiding time waste due to frequent plugging in and out transducers.



Pleural Effusion



Tricuspid Regurgitation

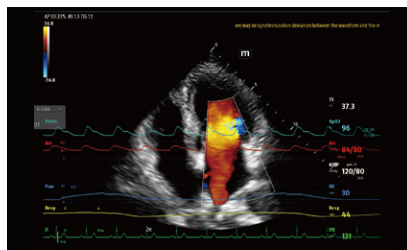


Lung B-Line

Innovative design and technology to refresh user experience



- Six seconds from standby by one touch, instant response to emergent use.
- 23.8" rotatable full-touch HD screen allows for both landscape and portrait display to meet the needs of various emergent scenarios.
- "X" ultra-compact chassis moves and rotates flexibly in narrow space.
- Retractable cord to reduce tripping hazards and contamination concerns.
- X-Link: Synchronously integrates ultrasound images and physiological information, providing comprehensive information for precise diagnosis.



Physio-View: Physiological information displayed on TEX20 series



U-View: Ultrasound information displayed on Central Station

www.mindray.com

Mindray Medical Europe | marketingeu@mindray.com
©2022 Shenzhen Mindray Bio-Medical Electronics Co., Ltd. All rights reserved.

mindray