



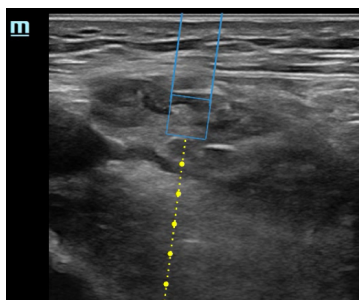
# TEX20

## Diagnostic Ultrasound System

### Anaesthesia

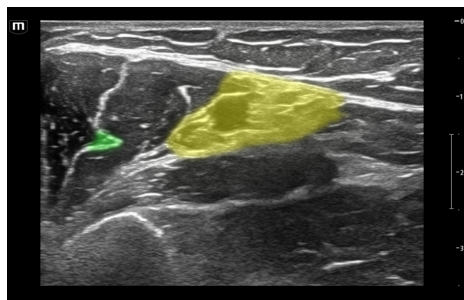
Equipped with the innovative eSpatial Navi secure needle guidance, the deep learning algorithm Smart Nerve that identifies and colorizes nerve structures automatically and an innovative tool for the evaluation of gastric antrum the **TEX20** makes ultrasound a more intelligent, supportive and a dedicated assistant for anaesthesia. The TEX20 completely integrates ultrasound into clinical procedure and treatment and makes ultrasound imaging clear and precise with ZST+ technology.

Automated Smart features support the anesthesiologist with intuitive functions for a safer procedure.



#### eSpatial Navi:

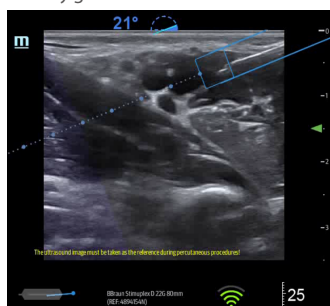
Realtime needle navigation in out of plane technique to visualize and plan the region, where the needle should be placed before the puncture.



#### Smart Nerve:

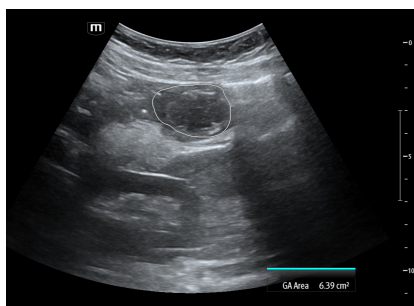
Realtime nerve visualisation with a deep learning algorithm that either enhances the nerve area or colorizes it.

X-Pilot: Clinical application-oriented workflow, including Shock, Respiration and Trauma application protocols which are based on the professional society guidelines.



#### eSpatial Navi:

Realtime needle navigation in inplane technique to visualize the needle in correspondence to the transducer and safely insert the needle to the target.



#### Auto GA:

Auto GA supports to automatically measure the gastric antrum area to distinguish between a sober patient and a patient with a filled stomach before starting a procedure.

**mindray**

# TEX20 series

## Diagnostic Ultrasound System

### Anaesthesia

Wireless design to better fit emergent environment and enhance efficiency



Wireless transducer i3P:  
Single crystal phased array with small footprint, light weight, quick charging and IP68 waterproof rating, dealing with complex clinical scenarios in and out of hospital.



Wireless charging:  
Wall-mounted or ground-based charging stations, immediate moving without unplugging power cable when emergent use.

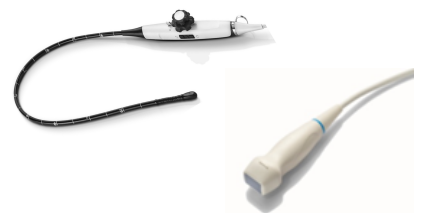
Dedicated transducer portfolio to cover high level anaesthesia ultrasound application



High frequency linear transducer dedicated for nerve imaging and needle visualisation



Convex transducer for deep nerve and abdominal imaging like gastric antrum

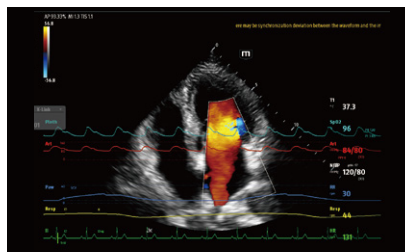


Transthoracic and transesophageal echocardiography transducer

Innovative design and technology to refresh user experience



- Six seconds from standby by one touch, instant response to emergent use.
- 23.8" rotatable full-touch HD screen allows for both landscape and portrait display to meet the needs of various emergent scenarios.
- "X" ultra-compact chassis moves and rotates flexibly in narrow space.
- Retractable cord to reduce tripping hazards and contamination concerns.
- X-Link: Synchronously integrates ultrasound images and physiological information, providing comprehensive information for precise diagnosis.



Physio-View: Physiological information displayed on TEX20 series



U-View: Ultrasound information displayed on Central Station

[www.mindray.com](http://www.mindray.com)

Mindray Medical Europe | [marketingeu@mindray.com](mailto:marketingeu@mindray.com)  
©2022 Shenzhen Mindray Bio-Medical Electronics Co., Ltd. All rights reserved.

**mindray**